

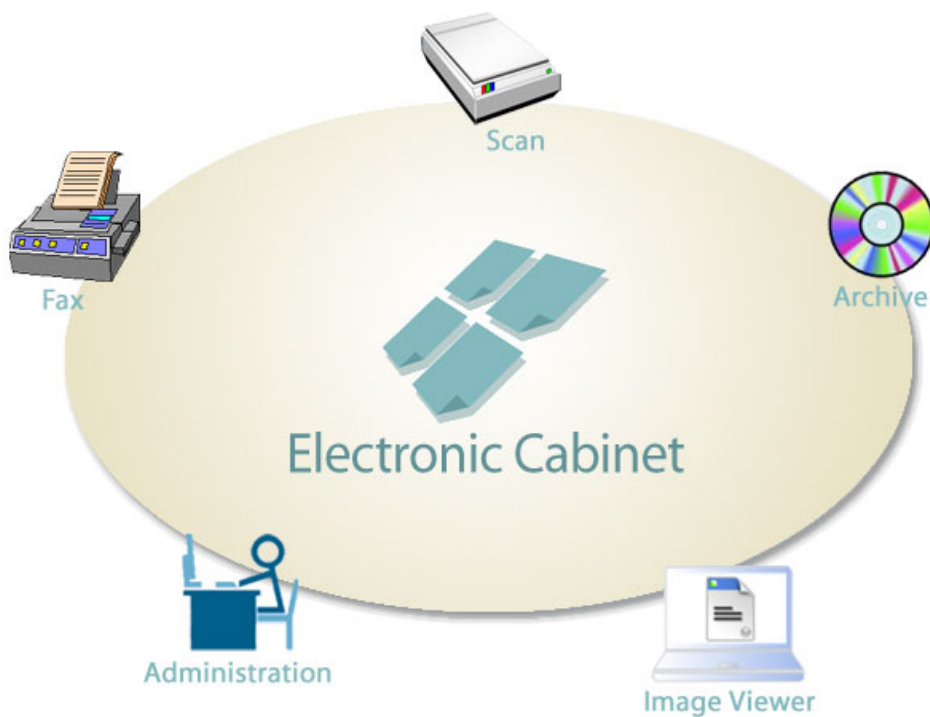


Electronic Cabinet

Product Overview

Paper documents still play an important role in today's business. Managing paper documents is the most labor-intensive process and one of the most expensive on-going tasks within an organization.

Electronic cabinet solution is a proven and full-featured total solution in paper document management. This solution allows you to capture, index and store paper documents, then quickly access and manage the documents with ease. The solution provides the foundation for full-scale paper document management for an organization.



Features and Benefits

High performance document capture

Provides a complete set of document capture feature including capture and index paper-based content (including incoming faxed documents), then imports to the central repository for 0 permanent storage. It streamlines the capture process and significantly decreases long-term operational expenses. It also has a complete set of highly configurable components which can be easily configured to adapt to your business needs.

The comprehensive indexing features provide automated indexing to realize immediate gains in data integrity by reducing the need for manual input and data entry and thereby increasing data security.

The screenshot displays the Scan software interface. On the left, there is a sidebar with a tree view showing document batches and pages. The main window displays a 'DELIVERY NOTE' from FDS Solutions Limited, dated 16th July 2003. The note includes details such as 'D/N NO.: 005-2003', 'DELIVER TO: FDS Co Ltd, Unit 2004, World Trade Centre, 280 Gloucester Road, Causeway Bay, Hong Kong', and 'ATTN: Ms. Mary Cheung'. Below the note is a table of items with columns for ITEM, MODEL#, PRODUCT DESCRIPTION, and QTY. The table lists 11 items, including development services, MSAR development, eProcess Definition Services, Image Services 3.x licenses, and various toolkits. At the bottom of the interface, there are fields for 'YOUR REFERENCE: QU/233/2003' and 'OUR REFERENCE: FD-20/2003'. A callout box on the right states: 'Captured documents are indexed according to their pre-set index values.'

ITEM	MODEL#	PRODUCT DESCRIPTION	QTY
1	306144	Development: Image Services 3.6/3.5E	1
2	302889	MSAR Development	1
3	306358	Development: eProcess Services 5.x	1
4	303443	eProcess Definition Services 5.x	1
5	303271	Image Services 3.x Dedicated User Licenses	1
6	303272	Image Services 3.x Shared User Licenses	1
7	306216	Image Services Toolkit 3.6/3.5E	2
8	303297	Capture Toolkit 3.x	2
9	303468	Toolkit for Web Services or IDM 3.x	2
10	306328	Workflow Services 3.x Dedicated User Licenses	1
11	306359	Workflow Services 3.x Shared User	1

Eyeball checking is provided for indexing to promote efficiency and avoid processing errors.

Document Cabinet for repository

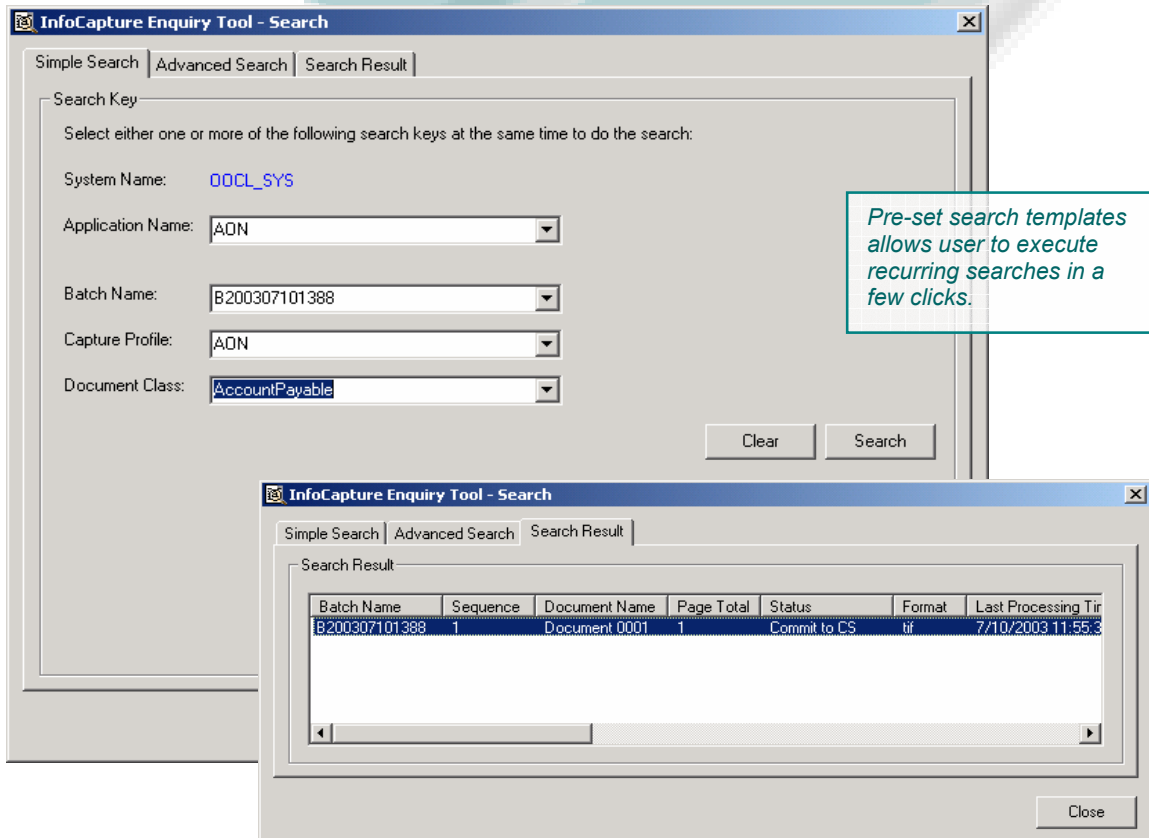
Provides an easily managed document repository for storing and sharing digitized document images access and ensures information security.

Easy-to-use user interface

Delivers a simple, user-friendly interface which is an environment familiar to corporate computing users. Learning time is reduced and users become productive faster than ever. Windows and toolbars of the out-of-box applications can be also customized to accommodate user preferences for enhanced productivity.

Search capabilities enable quick access to information

Provides immediate access and intuitive ways to find the information. Base on your business needs, search templates (static, dynamic) can be configured to make it easy to configure, store, and execute recurring searches.



Flexible, modular architecture

Modular design and reusable core components that can be customized to fit the needs of any organization environment, allowing for rapid system deployment and lower cost of ownership.

Expendable scalability

Fully packed with features and administration tools that allow you to expend the scale of the solution to support low- to high-volume document management. It also comes with the capability to expand the scale from a single department to enterprise level and integrates with business process automation solutions to establish an enterprise-wide business automation process environment.

Reliable archiving capabilities

Provides archiving services to archive critical information directly from the systems onto optical or magnetic medium. It also has the capability to locate and restore the data back to the system when necessary. The design of the archiving component allows you to tailor the applications to suit your archiving needs.

Technical Specifications

Product Components	Workstation Requirements	Server Requirements
Electronic Cabinet (Server)	HARDWARE <ul style="list-style-type: none">Intel or compatible Pentium 166 MHz128 MB RAM	HARDWARE <ul style="list-style-type: none">Pentium processor 400 MHz or higher512 MB RAMTCP/IP network interface
Electronic Cabinet (Shared User)	SOFTWARE <ul style="list-style-type: none">Microsoft Windows 2000 or NTMicrosoft Internet Explorer	RELATIONAL DATABASES <ul style="list-style-type: none">Microsoft SQL Server or Oracle

